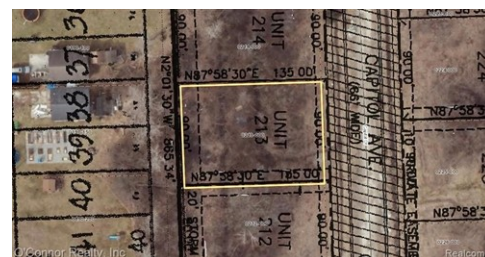




\$ 55,000



80 Capitol Dr, Marysville, MI 48040

- » MLS #: 20250018102
- » Land | Lot: 12,197 ft²
- » More Info: 80CapitolDr.IsForSale.com



Ed Quain
(810) 364-8700
edquain@oconnorrealty.com

O'Connor Realty
2801 Gratiot Blvd.
Marysville, MI 48040
(810) 364-8700

Remarks

A VERY nice, readily buildable lot in Presidential Estates, Marysville. Lot is 90' wide, wooded in rear, surrounded by new homes. All utilities are ready to go: water, sewer, storm drains, electric, street lights. Excellent city services: police, fire, DPW. Lot lies in the Gardens Elementary School area, which US News and World Report includes in its list of the 50 Best Elementary Schools in Michigan. Location is convenient to expressways and all the area's amenities. A great place to raise a family ! One of the last vacant lots in the sub.

